

Krzysztof Hejduk

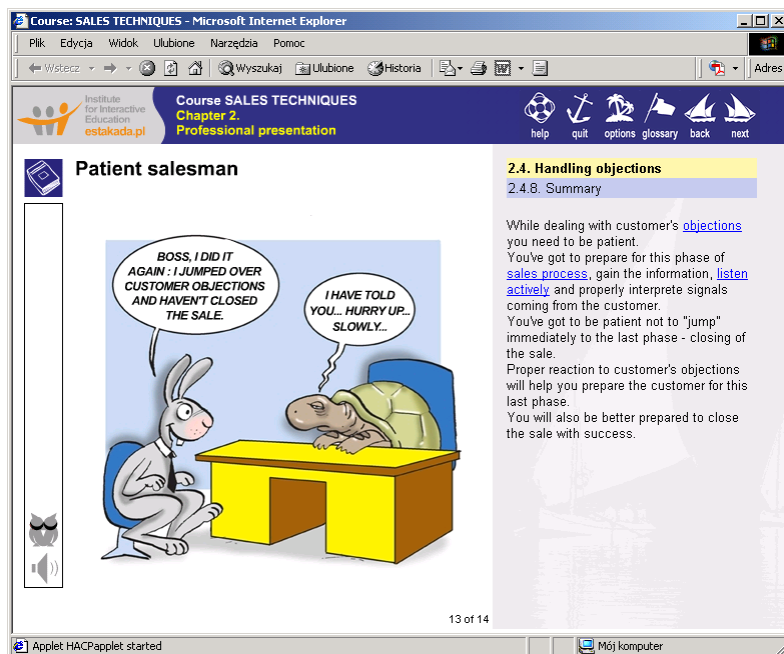
## To the left or to the right ?

where to put illustrations in e-learning course interface...

If you are to write some document with an illustration you may perhaps wonder where to place the illustration. Put it in the middle, to the left or the right side of your text? In e-learning course its much harder decision. There's always a lot of illustrations, where to put them all?

As you may find out from the book by Dryden/Vos „The Learning Revolution” the left hemisphere of human brain is responsible for analysis, facts, logical thinking. Thus the left side of human brain gives stronger possibilities to percept detailed information. The right hemisphere is responsible for synthesis, picture and impressions. Can we place text information directly in left and pictures in right hemisphere of our brains?

Great Feynmann lectures on physics give interesting hint how we see pictures and how the brain processes them. If you write vertical line in your sight, anything you place to the left of the line goes to the right hemisphere of your brain and anything you place to the right side of the line, goes to the left hemisphere.



This is why in our courses we put text at the right side of the course windows and synthesizing pictures are put at the left side. It gives better use of two given above experiences about human perception for easier learning the content.

On the left ;- ) you may see example of our e-learning course interface.

## Bibliography

*The Learning Revolution*, G. Dryden J. Vos, The Learning Web, 1999  
*The Feynmann Lectures on Physics*, R.P. Feynman, Addison-Wesley, 1965